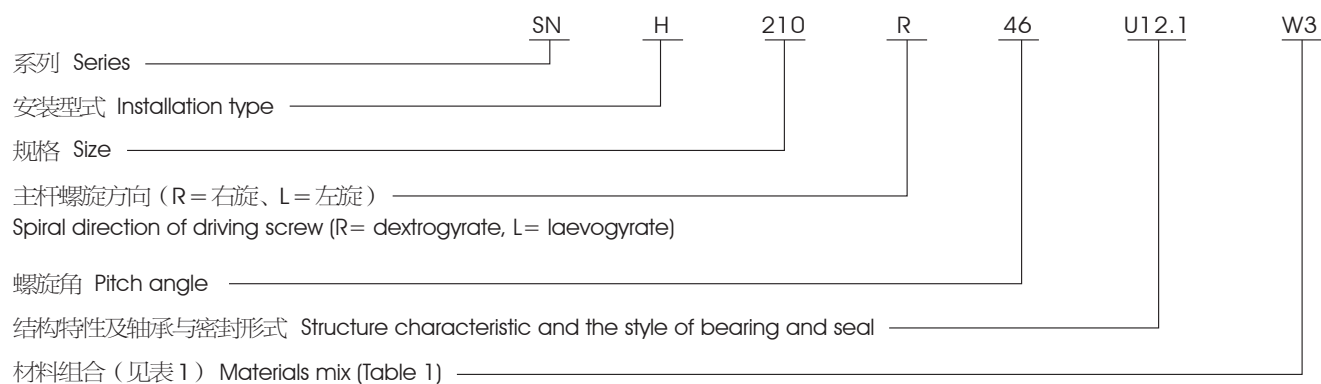


## SN 系列三螺杆泵的型式代号

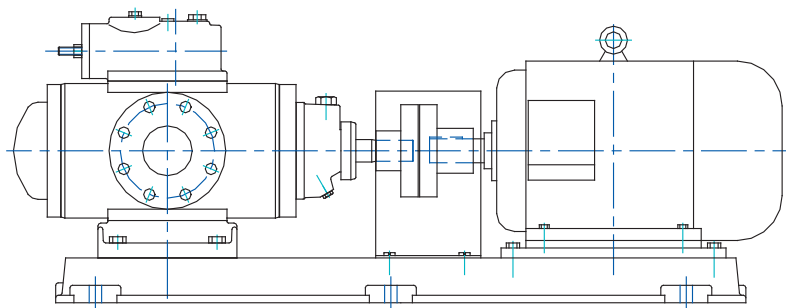


### 型式代号说明

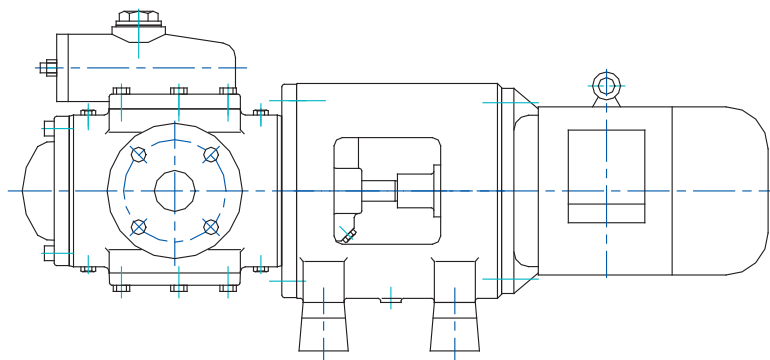
● 系列 SERIES

SN 单吸中压系列

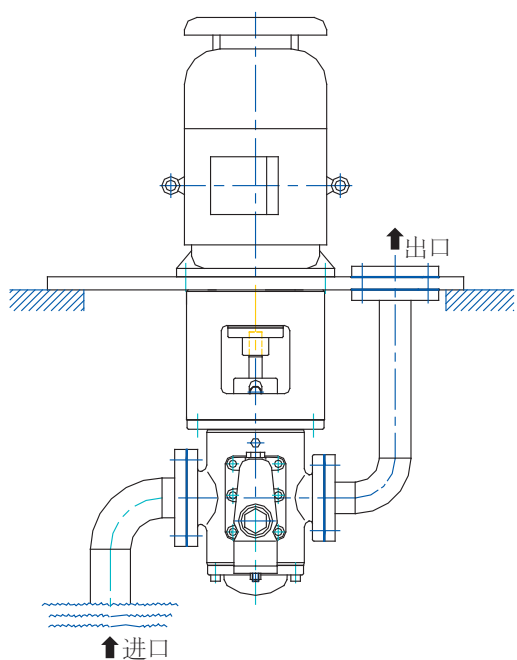
● 安装型式 INSTALLATION TYPE



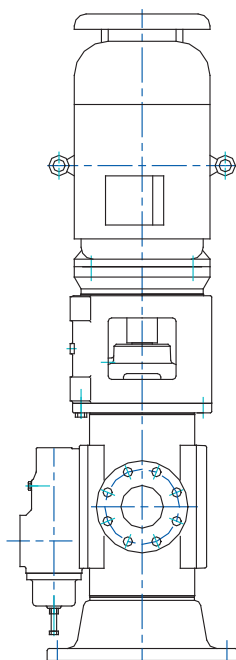
SNH: 卧式底脚安装



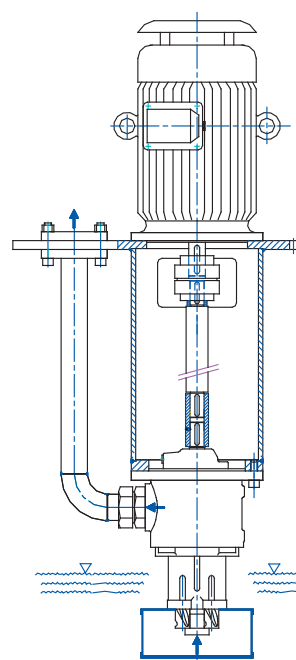
SNF: 卧式安装或壁挂式安装



SNF:箱顶悬挂式安装



SNS:立式圆盘底脚安装



SNJ:深井式安装

● 结构特性及轴承与密封形式

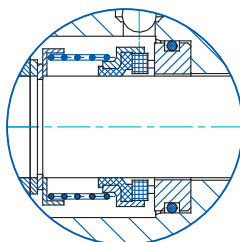
U: 内置滚动轴承

12.1(O43)、M3N、EA564T:

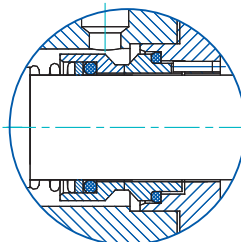
三种均为机械密封,

结构见右示意图

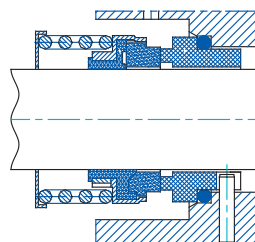
043型机械密封



M3N机械密封



EA564T机械密封



● 材料组合

材料组合代码 Code of materials mix	泵体 Pump Casing	衬套 Insert	主杆 Driving screw	从杆 Driven screw
W2	HT200	ZL109	16MnCrS5	16MnCrS5
W3	QT450-10	ZL109	16MnCrS5	16MnCrS5
W21	HT200	ZCuSn5Pb5Zn5	16MnCrS5	16MnCrS5
W23	QT450-10	ZCuSn5Pb5Zn5	16MnCrS5	16MnCrS5
W30	HT200	HT200	16MnCrS5 (≤280 规格)	45 (≤280 规格)
			45 (>280 规格)	LZQT400-15 (>280 规格)
W31	HT200	HT200	16MnCrS5	16MnCrS5
W32	HT200	耐磨铸铁	16MnCrS5	16MnCrS5
W34	HT200	ZQSn10-1	16MnCrS5	16MnCrS5
W35	HT200	耐磨铸铁	38CrMoAl	38CrMoAl
W36	HT200	ZQSn10-1	38CrMoAl	38CrMoAl
W37	HT200	ZQSn10-1	45	LZQT400-15

## 选泵流程

三螺杆泵选型时，用户提供下面《选型数据表》中的具体数据和相应的要求信息是非常必要的。这关系到泵的经济、正确的选型。

选型数据表

介质名称 Medium							
介质粘度 Medium viscosity	mm <sup>2</sup> /s	最高 max.		最低 min.		正常 Normally	
介质密度 Medium density	kg/m <sup>3</sup>	最高 max.		最低 min.		正常 Normally	
介质温度 Medium temperature	°C	最高 max.		最低 min.		正常 Normally	
泵送流量 Capacity	m <sup>3</sup> /h	最高 max.		最低 min.		正常 Normally	
泵进口压力 Inlet pressure	MPa	最高 max.		最低 min.		正常 Normally	
泵出口压力 Outlet pressure	MPa	最高 max.		最低 min.		正常 Normally	
泵进、出口压差 Diff. pressure	MPa	最高 max.		最低 min.		正常 Normally	
装置气蚀余量 NPSH	m						
环境温度 Environment Temperature	°C	最高 max.		最低 min.		正常 Normally	
驱动方式 Driving type							
安装位置 Installation position		室内 Indoors		室外 Outdoors			
操作状态 Operating state		连续 Continuously		不连续 Discontinuously			
安装方式 Installation type		卧式 Horizontally		立式 Vertically			
		其它 In other way					

### 选型说明

#### ① 确定泵的转速

泵转速与输送介质的粘度和泵规格有关，转速确定规则为：输送高粘度介质时，选低转速；否则相反。

##### 对于大规格的泵（SN440以上）

- 当润滑油粘度  $\gamma < 50^{\circ}\text{E}$  时，转速选取以1450r/min或950 r/min为宜；
- 当润滑油粘度  $\gamma > 50^{\circ}\text{E}$  时，转速选取以950 r/min为宜。

##### 对于小规格的泵（SN280以下）

- 当润滑油粘度  $\gamma < 50^{\circ}\text{E}$  时，转速选取以2900 r/min为宜；
- 当润滑油粘度  $\gamma > 50^{\circ}\text{E}$  时，转速选取以1450 r/min为宜。

如果输送介质的润滑性较差，或含有微量杂质，应选较低转速，使泵保持较长的使用寿命。推荐转速1450 r/min或更低。

#### ② 配套电机功率要求

泵的型号选定后，根据样本数据，可查到泵的轴功率N，电机功率Nm应按下表选取

N (kW)	$\leq 5$	$5 < N \leq 10$	$10 < N \leq 50$	$N > 50$
Nm (kW)	$\geq 1.25 \times N$	$\geq 1.2 \times N$	$\geq 1.15 \times N$	$\geq 1.1 \times N$

#### ③ 为了保证泵的安全运行，泵进口前必须安装过滤器，过滤精度为30~60目。





**SN系列三螺杆泵性能表 (950 r/min)**

规格 Size	转速 Rev. (r / min)	压力 Pressure (MPa)	运动粘度 Viscosity (mm <sup>2</sup> /s)													
			10		20		40		75		150		380		760	
			流量 Capacity (l / min)	轴功率 shaft power (kW)	流量 Capacity (l / min)	轴功率 shaft power (kW)	流量 Capacity (l / min)	轴功率 shaft power (kW)	流量 Capacity (l / min)	轴功率 shaft power (kW)	流量 Capacity (l / min)	轴功率 shaft power (kW)	流量 Capacity (l / min)	轴功率 shaft power (kW)	流量 Capacity (l / min)	轴功率 shaft power (kW)
1300-54	950	0.5	1061.7	10.75	1081.6	10.88	1092.3	10.88	1101.6	11.42	1107.1	11.96	1112.5	13.48	1115.3	15.16
		1	1011.4	20.12	1047.3	20.25	1066.7	20.25	1083.5	20.79	1093.4	21.33	1103	22.85	1108.2	24.53
		1.5	965	29.49	1015.6	29.62	1043	29.62	1066.7	30.16	1080.7	30.7	1094.2	32.21	1101.6	33.9
		2	920.9	38.86	985.5	38.99	1020.5	38.99	1050.7	39.53	1068.6	40.07	1085.9	41.58	1095.3	43.27
1700-42	950	0.5	924.9	9.98	940	10.16	948.4	10.16	955.5	10.79	959.7	11.46	963.8	13.47	966.1	15.71
		1	886.4	18.09	913.6	18.27	928.6	18.27	941.5	18.9	949.1	19.56	956.5	21.58	960.5	23.81
		1.5	850.8	26.2	889.2	26.38	910.4	26.38	928.6	27.01	939.3	27.67	949.8	29.69	955.4	31.92
		2	816.9	34.3	866	34.48	893.1	34.48	916.3	35.12	930	35.78	943.4	37.8	950.6	40.03
1700-46	950	0.5	1078.9	11.26	1094	11.44	1102.3	11.44	1109.5	12.08	1113.7	12.74	1117.8	14.76	1120	16.99
		1	1040.4	20.65	1067.6	20.83	1082.6	20.83	1095.5	21.47	1103.1	22.13	1110.5	24.15	1114.5	26.38
		1.5	1004.7	30.05	1043.2	30.22	1064.4	30.22	1082.6	30.86	1093.3	31.52	1103.7	33.54	1109.4	35.77
		2	970.9	39.44	1020	39.62	1047	39.62	1070.3	40.25	1084	40.91	1097.3	42.93	1104.5	45.16
2200-42	950	0.5	1207.7	13.03	1226.1	13.27	1236.1	13.27	1244.8	14.03	1249.9	14.82	1254.8	17.2	1257.5	20.03
		1	1161.1	23.58	1194.2	23.81	1212.2	23.81	1227.9	24.57	1237.1	25.36	1246	27.75	1250.8	30.58
		1.5	1118	34.13	1164.7	34.36	1190.1	34.36	1212.3	35.12	1225.3	35.91	1237.8	38.3	1244.6	41.13
		2	1077	44.67	1136.7	44.91	1169.2	44.91	1197.5	45.67	1214.1	46.46	1230.1	48.85	1238.8	51.68
2200-46	950	0.5	1402.9	14.66	1421.3	14.89	1431.3	14.89	1440	15.65	1445.1	16.44	1450	18.83	1452.7	21.66
		1	1356.3	26.83	1389.4	27.07	1407.4	27.07	1423.1	27.83	1432.3	28.62	1441.2	31	1446	33.84
		1.5	1313.2	39.01	1360	39.24	1385.4	39.24	1407.5	40	1420.5	40.79	1433.1	43.18	1439.9	46.01
		2	1272.3	51.18	1332	51.42	1364.4	51.42	1392.7	52.18	1409.3	52.97	1425.3	55.35	1434	58.19
2900-40	950	0.5	1792.4	19.36	1818.3	19.72	1832.2	19.72	1844.4	20.81	1851.5	22.1	1858.4	26.05	1862.1	29.82
		1	1727	34.98	1773.8	35.34	1798.8	35.34	1820.8	36.42	1833.6	37.71	1846.1	41.66	1852.8	45.44
		1.5	1666.6	50.59	1732.6	50.95	1767.9	50.95	1799	52.04	1817.1	53.33	1834.7	57.28	1844.2	61.05
		2	1609.2	66.21	1693.5	66.57	1738.6	66.57	1778.3	67.65	1801.3	68.94	1823.9	72.89	1835.9	76.67
3600-46	950	0.5	2251	23.19	2276.9	23.54	2290.8	23.54	2303	24.63	2310.1	25.92	2317	29.87	2320.8	33.64
		1	2185.6	42.62	2232.4	42.98	2257.4	42.98	2279.4	44.07	2292.2	45.36	2304.7	49.3	2311.4	53.08
		1.5	2125.2	62.06	2191.3	62.42	2226.6	62.42	2257.6	63.5	2275.7	64.79	2293.3	68.74	2302.8	72.52
		2	2067.8	81.5	2152.2	81.86	2197.2	81.86	2236.9	82.94	2260	84.23	2282.5	88.18	2294.6	91.96
5300-36	950	0.5	2322	27.6	2356	27.6	2369	27.6	2380	29.8	2387	32	2393	39.6	2396	46.9
		1	2261	47.7	2315	47.7	2338	47.7	2358	49.8	2370	52.1	2382	59.7	2388	67
		1.5	2189	67.7	2277	67.7	2310	67.7	2338	70	2355	72.1	2371	79.7	2380	87
		2	2132	87.8	2241	87.8	2283	87.8	2319	90	2341	92.5	2361	99.8	2372	107
5300-42	950	0.5	2850	32.2	2892	32.2	2907	32.2	2921	34.4	2929	36.6	2937	44.2	2941	51.4
		1	2776	56.8	2841	56.8	2870	56.8	2894	59	2909	61.2	2923	68.8	2931	76
		1.5	2687	81.4	2795	81.4	2835	81.4	2870	83.6	2890	85.8	2911	93.5	2921	100
		2	2616	106	2750	106	2803	106	2846	108	2873	110	2898	118	2911	125
5300-46	950	0.5	3378	36.8	3428	36.8	3446	36.8	3463	39	3472	41.2	3481	48.8	3486	56
		1	3290	66	3368	66	3402	66	3431	68.2	3448	70.4	3465	77.9	3474	85.2
		1.5	3185	95.1	3313	95.1	3361	95.1	3402	97.3	3426	100	3450	107	3462	114
		2	3101	124	3260	124	3322	124	3374	127	3405	129	3435	136	3451	144
7400-32	950	0.5	2805	35.5	2847	35.5	2862	35.5	2876	38.8	2883	42	2891	51.7	2895	62.8
		1	2732	59.7	2797	59.7	2825	59.7	2849	63	2864	66.2	2878	76	2885	87
		1.5	2645	84	2751	84	2791	84	2825	87.5	2845	90.5	2865	100	2875	111
		2	2575	108	2707	108	2759	108	2802	111	2828	115	2853	125	2866	136
7400-40	950	0.5	3740	43.6	3796	43.6	3816	43.6	3834	46.9	3844	50.1	3854	59.8	3860	71
		1	3643	76	3729	76	3767	76	3799	79.2	3818	82.5	3837	92.1	3847	103
		1.5	3527	108	3668	108	3722	108	3767	112	3793	115	3820	125	3833	136
		2	3434	141	3610	141	3678	141	3736	144	3770	147	3803	157	3821	168
9400-32	950	0.5	3606	45.6	3660	45.6	3679	45.6	3697	48.8	3707	53.5	3716	66	3722	80.5
		1	3512	76.7	3596	76.7	3632	76.7	3663	80	3681	84.6	3699	97.1	3709	112
		1.5	3400	108	3537	108	3588	108	3632	111	3657	116	3683	128	3696	143
		2	3310	139	3480	139	3546	139	3602	142	3635	147	3667	160	3684	174
9400-40	950	0.5	4829	56.1	4900	56.1	4926	56.1	4950	59.3	4963	64	4976	76.5	4983	91
		1	4703	97.8	4814	97.8	4863	97.8	4904	101	4929	106	4953	118	4966	133
		1.5	4553	140	4736	140	4804	140	4863	143	4897	148	4932	160	4949	175
		2	4433	181	4660	181	4749	181	4823	184	4867	189	4910	202	4933	216







SN系列三螺杆泵性能表 (1450 r/min)

规格 Size	转速 Rev. (r / min)	压力 Pressure (MPa)	运动粘度 Viscosity (mm <sup>2</sup> /s)													
			10		20		40		75		150		380		760	
			流量 Capacity (l / min)	轴功率 shaft power (kW)	流量 Capacity (l / min)	轴功率 shaft power (kW)	流量 Capacity (l / min)	轴功率 shaft power (kW)	流量 Capacity (l / min)	轴功率 shaft power (kW)	流量 Capacity (l / min)	轴功率 shaft power (kW)	流量 Capacity (l / min)	轴功率 shaft power (kW)	流量 Capacity (l / min)	轴功率 shaft power (kW)
1300-54	1450	0.5	1653.4	17.52	1673.3	17.83	1684	17.83	1693.4	19.08	1698.9	20.34	1704.2	23.87	1707.1	27.8
		1	1603.2	31.82	1639	32.13	1658.4	32.13	1675.2	33.38	1685.1	34.64	1694.7	38.17	1699.9	42.1
		1.5	1556.7	46.12	1607.3	46.43	1634.7	46.43	1658.4	47.68	1672.4	48.94	1685.9	52.47	1693.3	56.4
		2	1512.6	60.42	1577.2	60.73	1612.2	60.73	1642.5	61.98	1660.3	63.24	1677.6	66.77	1687	70.7
1700-42	1450	0.5	1437	16.74	1452.1	17.16	1460.4	17.16	1467.6	18.64	1471.8	20.18	1475.9	24.88	1478.1	30.08
		1	1398.5	29.11	1425.7	29.53	1440.7	29.53	1453.6	31.01	1461.2	32.55	1468.6	37.25	1472.6	42.45
		1.5	1362.8	41.49	1401.3	41.91	1422.5	41.91	1440.7	43.39	1451.4	44.93	1461.9	49.63	1467.5	54.83
		2	1329	53.86	1378.1	54.28	1405.1	54.28	1428.4	55.76	1442.1	57.3	1455.4	62	1462.6	67.2
1700-46	1450	0.5	1672	18.7	1687.1	19.11	1695.4	19.11	1702.6	20.59	1706.8	22.13	1710.9	26.83	1713.1	32.03
		1	1633.5	33.03	1660.7	33.45	1675.7	33.45	1688.6	34.93	1696.2	36.47	1703.6	41.17	1707.6	46.37
		1.5	1597.8	47.36	1636.3	47.78	1657.5	47.78	1675.7	49.26	1686.4	50.8	1696.9	55.5	1702.5	60.7
		2	1564	61.7	1613.1	62.11	1640.1	62.11	1663.4	63.59	1677.1	65.13	1690.4	69.83	1697.6	75.03
2200-42	1450	0.5	1873.9	21.88	1892.3	22.43	1902.3	22.43	1911	24.2	1916.1	26.04	1921	31.6	1923.7	38.2
		1	1827.3	37.98	1860.4	38.53	1878.4	38.53	1894.1	40.3	1903.3	42.14	1912.2	47.7	1917	54.3
		1.5	1784.2	54.08	1830.9	54.63	1856.3	54.63	1878.5	56.4	1891.5	58.24	1904.1	63.8	1910.8	70.4
		2	1743.2	70.18	1802.9	70.73	1835.4	70.73	1863.7	72.5	1880.3	74.34	1896.3	79.9	1905	86.5
2200-46	1450	0.5	2171.9	24.36	2190.3	24.91	2200.3	24.91	2209	26.68	2214.1	28.52	2219	34.08	2221.7	40.68
		1	2125.3	42.95	2158.4	43.5	2176.4	43.5	2192.1	45.27	2201.3	47.11	2210.2	52.67	2215	59.27
		1.5	2082.2	61.53	2128.9	62.08	2154.3	62.08	2176.5	63.85	2189.5	65.69	2202.1	71.25	2208.8	77.85
		2	2041.2	80.11	2100.9	80.66	2133.4	80.66	2161.7	82.43	2178.3	84.27	2194.3	89.83	2203	96.43
2900-40	1450	0.5	2778.6	32.57	2804.5	33.4	2818.4	33.4	2830.6	35.93	2837.7	38.93	2844.6	48.13	2848.3	56.93
		1	2713.2	56.4	2760	57.24	2785	57.24	2807	59.77	2819.8	62.77	2832.3	71.97	2839	80.77
		1.5	2652.8	80.24	2718.9	81.07	2754.1	81.07	2785.2	83.6	2803.3	86.6	2820.9	95.8	2830.4	104.6
		2	2595.4	104.07	2679.7	104.9	2724.8	104.9	2764.5	107.43	2787.5	110.43	2810.1	119.63	2822.1	128.43
3600-46	1450	0.5	3478.6	38.4	3504.5	39.24	3518.4	39.24	3530.6	41.77	3537.7	44.77	3544.6	53.97	3548.3	62.77
		1	3413.2	68.07	3460	68.9	3485	68.9	3507	71.43	3519.8	74.43	3532.3	83.63	3539	92.43
		1.5	3352.8	97.74	3418.9	98.57	3454.1	98.57	3485.2	101.1	3503.3	104.1	3520.9	113.3	3530.4	122.1
		2	3295.4	127.4	3379.7	128.24	3424.8	128.24	3464.5	130.77	3487.5	133.77	3510.1	142.97	3522.1	151.77
5300-36	1450	0.5	3590	48.5	3623	48.5	3636	48.5	3647	53.5	3653	58.8	3659	76.5	3663	93.1
		1	3522	78.9	3581	78.9	3605	78.9	3625	84.5	3636	89.5	3648	107	3654	124
		1.5	3460	110	3544	110	3577	110	3605	116	3621	121	3638	138	3646	155
		2	3400	141	3507	141	3550	141	3586	146	3607	151	3627	168	3638	185
5300-42	1450	0.5	4406	55.5	4447	55.5	4463	55.5	4477	60.5	4484	65.6	4492	83.2	4496	100
		1	4323	92.8	4396	92.8	4425	92.8	4450	98	4464	104	4478	121	4486	138
		1.5	4247	131	4350	131	4391	131	4425	136	4445	141	4466	159	4476	176
		2	4174	168	4305	168	4358	168	4402	173	4428	179	4453	196	4467	213
5300-46	1450	0.5	5223	62.2	5271	62.2	5290	62.2	5306	67.3	5315	72.5	5324	90.1	5329	107
		1	5124	107	5211	107	5245	107	5274	112	5291	117	5308	135	5317	152
		1.5	5034	151	5156	151	5204	151	5245	156	5269	162	5293	179	5305	196
		2	4947	196	5103	196	5165	196	5217	201	5248	206	5278	224	5294	241
7400-32	1450	0.5	4337	63.5	4377	63.5	4393	63.5	4406	71	4414	78.5	4421	101	4425	127
		1	4255	100	4327	100	4356	100	4380	108	4394	116	4408	138	4415	164
		1.5	4180	138	4282	138	4321	138	4356	145	4375	153	4395	175	4405	201
		2	4108	175	4238	175	4289	175	4332	182	4358	190	4388	212	4396	238
7400-40	1450	0.5	5783	75.8	5837	75.8	5858	75.8	5875	83.3	5885	90.8	5895	114	5901	140
		1	5674	126	5770	126	5808	126	5840	133	5859	141	5878	163	5888	189
		1.5	5574	175	5709	175	5762	175	5808	182	5834	190	5861	212	5874	238
		2	5478	224	5651	224	5719	224	5777	232	5811	239	5844	262	5862	288
9400-32	1450	0.5	5575	81	5627	81	5647	81	5664	88.6	5674	99.6	5683	129	5688	163
		1	5470	129	5562	129	5599	129	5630	136	5648	147	5666	176	5676	210
		1.5	5374	176	5504	176	5555	176	5599	184	5624	195	5650	224	5663	258
		2	5281	224	5447	224	5513	224	5569	231	5602	242	5634	271	5651	305
9400-40	1450	0.5	7465	97.1	7534	97.1	7561	97.1	7584	105	7597	116	7610	145	7617	179
		1	7324	161	7448	161	7497	161	7538	168	7562	179	7587	208	7600	242
		1.5	7195	225	7369	225	7438	225	7497	232	7531	243	7565	272	7582	306
		2	7071	288	7294	288	7382	288	7457	295	7500	307	7544	336	7567	370

**SN系列三螺杆泵性能表 (2900 r/min)**

规格 Size	转速 Rev. (r / min)	压力 Pressure (MPa)	运动粘度 Viscosity (mm <sup>2</sup> /s)													
			10		20		40		75		150		380		760	
			流量 Capacity (l / min)	轴功率 shaft power (kW)	流量 Capacity (l / min)	轴功率 shaft power (kW)	流量 Capacity (l / min)	轴功率 shaft power (kW)	流量 Capacity (l / min)	轴功率 shaft power (kW)	流量 Capacity (l / min)	轴功率 shaft power (kW)	流量 Capacity (l / min)	轴功率 shaft power (kW)	流量 Capacity (l / min)	轴功率 shaft power (kW)
40-38	2900	0.5	60.6	1.07	61.4	1.13	61.8	1.13	62.1	1.41	62.3	1.81	62.6	2.29	62.7	3.17
		1	58.7	1.6	60.1	1.65	60.8	1.65	61.4	1.93	61.8	2.33	62.2	2.81	62.4	3.69
		1.5	57	2.12	58.9	2.18	59.9	2.18	60.7	2.46	61.3	2.86	61.9	3.34	62.2	4.22
		2	55.3	2.65	57.8	2.7	59	2.7	60.1	2.98	60.8	3.38	61.6	3.86	61.9	4.74
40-46	2900	0.5	80.7	1.25	81.8	1.3	82.3	1.3	82.8	1.58	83.1	1.98	83.4	2.46	83.6	3.34
		1	78.1	1.95	80	2	81	2	81.9	2.28	82.4	2.68	82.9	3.16	83.2	4.04
		1.5	75.7	2.65	78.4	2.7	79.8	2.7	81	2.98	81.7	3.38	82.4	3.86	82.9	4.74
		2	73.3	3.35	76.8	3.4	78.6	3.4	80.2	3.68	81.1	4.08	82	4.56	82.6	5.44
40-54	2900	0.5	107.6	1.49	109.2	1.54	110.1	1.54	110.9	1.82	111.4	2.22	111.8	2.7	112.1	3.58
		1	103.4	2.43	106.4	2.48	108	2.48	109.4	2.76	110.2	3.16	111	3.64	111.5	4.52
		1.5	99.5	3.37	103.8	3.42	106	3.42	108	3.7	109.1	4.1	110.3	4.58	111	5.46
		2	95.8	4.31	101.3	4.36	104.1	4.36	106.7	4.64	108.1	5.04	109.6	5.52	110.5	6.4
80-36	2900	0.5	111.1	1.73	112.3	1.8	113	1.8	113.6	2.16	113.9	2.68	114.3	3.36	114.4	4.48
		1	108	2.68	110.2	2.76	111.4	2.76	112.5	3.12	113.1	3.64	113.7	4.32	114	5.44
		1.5	105.1	3.64	108.2	3.72	109.9	3.72	111.5	4.08	112.3	4.6	113.2	5.28	113.6	6.4
		2	102.4	4.6	106.3	4.67	108.5	4.67	110.5	5.03	111.6	5.55	112.7	6.23	113.2	7.35
80-42	2900	0.5	134.7	1.93	136.4	2.01	137.3	2.01	138.1	2.37	138.6	2.89	139	3.57	139.2	4.69
		1	130.5	3.1	133.5	3.17	135.1	3.17	136.5	3.53	137.4	4.05	138.2	4.73	138.6	5.85
		1.5	126.5	4.27	130.8	4.34	133.1	4.34	135.1	4.7	136.3	5.22	137.5	5.9	138	7.02
		2	122.8	5.43	128.3	5.51	131.2	5.51	133.7	5.87	135.3	6.39	136.8	7.07	137.5	8.19
80-46	2900	0.5	158.7	2.13	160.4	2.21	161.3	2.21	162.1	2.57	162.6	3.09	163	3.77	163.2	4.89
		1	154.5	3.5	157.5	3.57	159.1	3.57	160.5	3.93	161.4	4.45	162.2	5.13	162.6	6.25
		1.5	150.5	4.87	154.8	4.94	157.1	4.94	159.1	5.3	160.3	5.82	161.5	6.5	162	7.62
		2	146.8	6.23	152.3	6.31	155.2	6.31	157.7	6.67	159.3	7.19	160.8	7.87	161.5	8.99
80-54	2900	0.5	207.6	2.57	210.2	2.64	211.7	2.64	212.9	3	213.7	3.52	214.4	4.2	214.8	5.32
		1	200.8	4.37	205.6	4.44	208.2	4.44	210.5	4.8	211.8	5.32	213.1	6	213.8	7.12
		1.5	194.5	6.17	201.3	6.24	205	6.24	208.2	6.6	210.1	7.12	211.9	7.8	212.9	8.92
		2	188.6	7.97	197.3	8.04	201.9	8.04	206.1	8.4	208.4	8.92	210.8	9.6	212	10.72
120-42	2900	0.5	193.1	2.98	195.3	3.11	196.5	3.11	197.5	3.63	198.1	4.39	198.7	5.51	199	7.43
		1	187.6	4.65	191.6	4.77	193.7	4.77	195.5	5.29	196.6	6.05	197.7	7.17	198.2	9.09
		1.5	182.5	6.31	188.1	6.44	191.1	6.44	193.6	6.96	195.2	7.72	196.8	8.84	197.5	10.76
		2	177.7	7.98	184.9	8.11	188.6	8.11	191.9	8.63	193.9	9.39	195.9	10.51	196.8	12.43
120-46	2900	0.5	229.1	3.28	231.3	3.41	232.5	3.41	233.5	3.93	234.1	4.69	234.7	5.81	235	7.73
		1	223.6	5.25	227.6	5.37	229.7	5.37	231.5	5.89	232.6	6.65	233.7	7.77	234.2	9.69
		1.5	218.5	7.21	224.1	7.34	227.1	7.34	229.6	7.86	231.2	8.62	232.8	9.74	233.5	11.66
		2	213.7	9.18	220.9	9.31	224.6	9.31	227.9	9.83	229.9	10.59	231.9	11.71	232.8	13.63
120-51	2900	0.5	267.1	3.63	270.5	3.76	272.4	3.76	274.1	4.28	275	5.04	275.9	6.16	276.4	8.08
		1	258.3	5.95	264.5	6.07	267.9	6.07	270.9	6.59	272.6	7.35	274.3	8.47	275.2	10.39
		1.5	250.2	8.26	258.9	8.39	263.7	8.39	268	8.91	270.4	9.67	272.8	10.79	274	12.71
		2	242.5	10.58	253.7	10.71	259.8	10.71	265.2	11.23	268.3	11.99	271.3	13.11	273	15.03
120-54	2900	0.5	303.1	3.93	306.5	4.06	308.4	4.06	310.1	4.58	311	5.34	311.9	6.46	312.4	8.38
		1	294.3	6.55	300.5	6.67	303.9	6.67	306.9	7.19	308.6	7.95	310.3	9.07	311.2	10.99
		1.5	286.2	9.16	294.9	9.29	299.7	9.29	304	9.81	306.4	10.57	308.8	11.69	310	13.61
		2	278.5	11.78	289.7	11.91	295.8	11.91	301.2	12.43	304.3	13.19	307.3	14.31	309	16.23
210-40	2900	0.5	326.2	4.83	328.7	5.02	330	5.02	331.2	5.74	331.9	6.9	332.6	8.82	332.9	11.74
		1	320	7.61	324.4	7.81	326.8	7.81	328.9	8.53	330.2	9.69	331.4	11.61	332	14.53
		1.5	314.2	10.39	320.4	10.59	323.8	10.59	326.8	11.31	328.6	12.47	330.3	14.39	331.2	17.31
		2	308.7	13.18	316.7	13.37	321	13.37	324.8	14.09	327.2	15.25	329.3	17.17	330.4	20.09
210-46	2900	0.5	409.4	5.54	412.7	5.74	414.6	5.74	416.2	6.46	417.1	7.62	418	9.54	418.5	12.46
		1	400.9	9.04	406.9	9.24	410.2	9.24	413.1	9.96	414.8	11.12	416.4	13.04	417.3	15.96
		1.5	393.1	12.54	401.5	12.74	406.2	12.74	410.3	13.46	412.7	14.62	414.9	16.54	416.2	19.46
		2	385.6	16.04	396.4	16.24	402.3	16.24	407.6	16.96	410.6	18.12	413.5	20.04	415.1	22.96
210-54	2900	0.5	543	6.71	548.4	6.91	551.3	6.91	553.8	7.63	555.3	8.79	556.8	10.71	557.6	13.63
		1	529.4	11.38	539.1	11.57	544.3	11.57	548.9	12.29	551.6	13.45	554.2	15.37	555.6	18.29
		1.5	516.9	16.04	530.5	16.24	537.8	16.24	544.3	16.96	548.1	18.12	551.8	20.04	553.8	22.96
		2	504.9	20.71	522.3	20.91	531.7	20.91	540	21.63	544.9	22.79	549.5	24.71	552.1	27.63
280-43	2900	0.5	481.2	7.22	485.2	7.52	487.5	7.52	489.3	8.68	490.5	10.32	491.6	13.4	492.2	17.68
		1	470.9	11.34	478.2	11.63	482.2	11.63	485.6	12.79	487.7	14.43	489.6	17.51	490.7	21.79
		1.5	461.4	15.45	471.7	15.75	477.3	15.75	482.1	16.91	485.1	18.55	487.8	21.63	489.3	25.91
		2	452.3	19.57	465.5	19.87	472.7	19.87	478.9	21.03	482.6	22.67	486.1	25.75	488.1	30.03
280-46	2900	0.5	547.2	7.77	551.2	8.07	553.5	8.07	555.3	9.23	556.5	10.87	557.6	13.95	558.2	18.23
		1	536.9	12.44	544.2	12.73	548.2	12.73	551.6	13.89	553.7	15.53	555.6	18.61	556.7	22.89
		1.5	527.4	17.1	537.7	17.4	543.3	17.4	548.1	18.56	551.1	20.2	553.8	23.28	555.3	27.56
		2	518.3	21.77	531.5	22.07	538.7	22.07	544.9	23.23	548.6	24.87	552.1	27.95	554.1	32.23
280-54	2900	0.5	725.5	9.32	732	9.62	735.5	9.62	738.6	10.78	740.4	12.42	742.1	15.5	743.1	19.78
		1	709.1	15.54	720.7	15.83	727.1	15.83	732.6	16.99	735.9	18.63	739	21.71	740.7	25.99
		1.5	693.9	21.75	710.3	22.05	719.3	22.05	727.1	23.21	731.7	24.85	736.1	27.93	738.5	32.21
		2	679.5	27.97	700.4	28.27	711.9	28.27	721.8	29.43	727.8	31.07	733.4	34.15	736.4	38.43

**SN系列三螺杆泵性能表 (2900 r/min)**

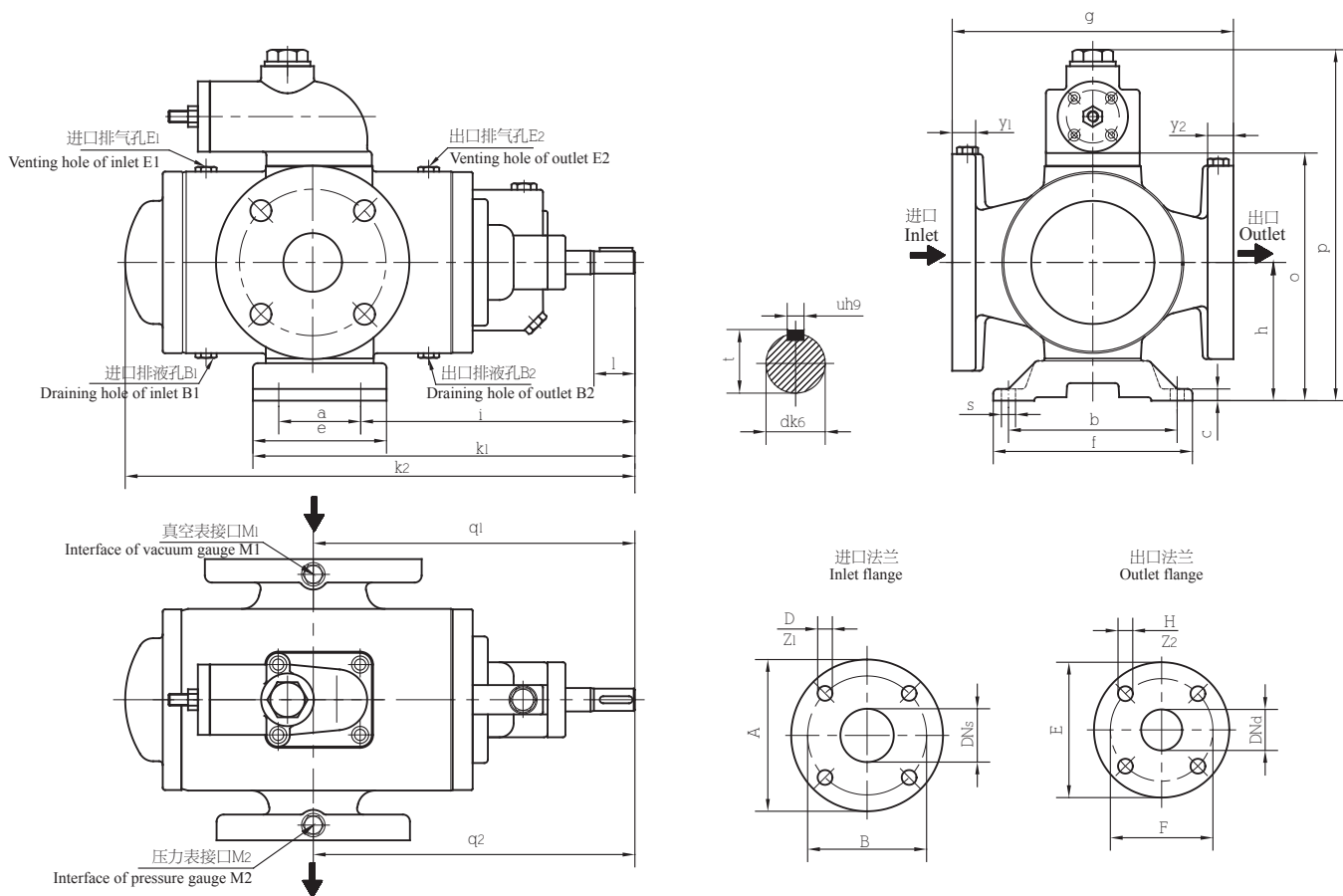
规格 Size	转速 Rev. (r / min)	压力 Pressure (MPa)	运动粘度 Viscosity (mm <sup>2</sup> /s)													
			10		20		40		75		150		380		760	
			流量 Capacity (l / min)	轴功率 shaft power (kW)	流量 Capacity (l / min)	轴功率 shaft power (kW)	流量 Capacity (l / min)	轴功率 shaft power (kW)	流量 Capacity (l / min)	轴功率 shaft power (kW)	流量 Capacity (l / min)	轴功率 shaft power (kW)	流量 Capacity (l / min)	轴功率 shaft power (kW)	流量 Capacity (l / min)	轴功率 shaft power (kW)
440-40	2900	0.5	678.9	10.33	683	10.77	685.3	10.77	687.2	12.53	688.4	14.73	689.5	19.33	690.1	25.77
		1	668.3	16.1	675.8	16.53	679.9	16.53	683.4	18.29	685.5	20.49	687.5	25.09	688.6	31.53
		1.5	658.6	21.86	669.1	22.3	674.9	22.3	679.9	24.06	682.8	26.26	685.6	30.86	687.2	37.3
		2	825.8	34.03	844.2	34.47	854.1	34.47	862.9	36.23	868	38.43	873	43.03	875.7	49.47
440-46	2900	0.5	866.1	11.93	871.7	12.37	874.8	12.37	877.5	14.13	879.1	16.33	880.6	20.93	881.4	27.37
		1	851.7	19.3	861.9	19.73	867.4	19.73	872.3	21.49	875.1	23.69	877.9	28.29	879.4	34.73
		1.5	838.4	26.66	852.8	27.1	860.6	27.1	867.5	28.86	871.4	31.06	875.4	35.66	877.5	42.1
		2	825.8	34.03	844.2	34.47	854.1	34.47	862.9	36.23	868	38.43	873	43.03	875.7	49.47
440-52	2900	0.5	1011.3	13.23	1020.4	13.67	1025.3	13.67	1029.6	15.43	1032.1	17.63	1034.6	22.23	1035.9	28.67
		1	988.3	21.9	1004.6	22.33	1013.5	22.33	1021.3	24.09	1025.8	26.29	1030.2	30.89	1032.6	37.33
		1.5	967	30.56	990	31	1002.6	31	1013.6	32.76	1020	34.96	1026.2	39.56	1029.6	46
		2	946.8	39.23	976.2	39.67	992.2	39.67	1006.3	41.43	1014.4	43.63	1022.3	48.23	1026.7	54.67
440-54	2900	0.5	1131.3	14.23	1140.4	14.67	1145.3	14.67	1149.6	16.43	1152.1	18.63	1154.6	23.23	1155.9	29.67
		1	1108.3	23.9	1124.6	24.33	1133.5	24.33	1141.3	26.09	1145.8	28.29	1150.2	32.89	1152.6	39.33
		1.5	1087	33.56	1110	34	1122.6	34	1133.6	35.76	1140	37.96	1146.2	42.56	1149.6	49
		2	1066.8	43.23	1096.2	43.67	1112.2	43.67	1126.3	45.43	1134.4	47.63	1142.3	52.23	1146.7	58.67
660-40	2900	0.5	1058.4	15.54	1064	16.17	1067	16.17	1069.6	18.69	1071.2	21.77	1072.7	28.69	1073.5	37.81
		1	1044.3	24.51	1054.4	25.13	1059.8	25.13	1064.5	27.65	1067.3	30.73	1070	37.65	1071.5	46.77
		1.5	1031.3	33.47	1045.5	34.1	1053.1	34.1	1059.8	36.62	1063.7	39.7	1067.5	46.62	1069.6	55.74
		2	1018.9	42.44	1037.1	43.07	1046.8	43.07	1055.3	45.59	1060.3	48.67	1065.2	55.59	1067.9	64.71
660-44	2900	0.5	1196	16.74	1203.6	17.37	1207.7	17.37	1211.3	19.89	1213.4	22.97	1215.5	29.89	1216.6	39.01
		1	1176.7	26.91	1190.4	27.53	1197.9	27.53	1204.3	30.05	1208.1	33.13	1211.8	40.05	1213.8	49.17
		1.5	1158.9	37.07	1178.2	37.7	1188.8	37.7	1197.8	40.22	1203.2	43.3	1208.4	50.22	1211.2	59.34
		2	1142	47.24	1166.6	47.87	1180.2	47.87	1191.7	50.39	1198.6	53.47	1205.2	60.39	1208.8	69.51
660-46	2900	0.5	1296	17.57	1303.6	18.2	1307.7	18.2	1311.3	20.72	1313.4	23.8	1315.5	30.72	1316.6	39.84
		1	1276.7	28.57	1290.4	29.2	1297.9	29.2	1304.3	31.72	1308.1	34.8	1311.8	41.72	1313.8	50.84
		1.5	1258.9	39.57	1278.2	40.2	1288.8	40.2	1297.8	42.72	1303.2	45.8	1308.4	52.72	1311.2	61.84
		2	1242	50.57	1266.6	51.2	1280.2	51.2	1291.7	53.72	1298.6	56.8	1305.2	63.72	1308.8	72.84
940-36	2900	0.5	1293.3	20.39	1300.5	21.29	1304.4	21.29	1307.8	24.81	1309.8	28.93	1312.1	38.65	1312.7	50.97
		1	1275.1	31.35	1288	32.25	1295.1	32.25	1301.2	35.77	1304.8	39.89	1308.9	49.61	1310.1	61.93
		1.5	1258.3	42.32	1276.5	43.22	1286.5	43.22	1295.1	46.74	1300.2	50.86	1306	60.58	1307.7	72.9
		2	1242.3	53.29	1265.5	54.19	1278.3	54.19	1289.3	57.71	1295.8	61.83	1303.2	71.55	1305.4	83.87
940-42	2900	0.5	1535	22.47	1544.8	23.37	1550.1	23.37	1554.8	26.89	1557.5	31.01	1560.1	40.73	1561.6	53.05
		1	1510.1	35.52	1527.7	36.42	1537.4	36.42	1545.8	39.94	1550.7	44.06	1555.4	53.78	1558	66.1
		1.5	1487.1	48.57	1511.9	49.47	1525.6	49.47	1537.5	52.99	1544.4	57.11	1551	66.83	1554.7	79.15
		2	1465.3	61.62	1497	62.52	1514.4	62.52	1529.6	66.04	1538.4	70.16	1546.9	79.88	1551.6	92.2
940-46	2900	0.5	1849	25.09	1858.8	25.99	1864.1	25.99	1868.8	29.51	1871.5	33.63	1874.1	43.35	1875.6	55.67
		1	1824.1	40.75	1841.7	41.65	1851.4	41.65	1859.8	45.17	1864.7	49.29	1869.4	59.01	1872	71.33
		1.5	1801.1	56.42	1825.9	57.32	1839.6	57.32	1851.5	60.84	1858.4	64.96	1865	74.68	1868.7	87
		2	1779.3	72.09	1811	72.99	1828.4	72.99	1843.6	76.51	1852.4	80.63	1860.9	90.35	1865.6	102.67
940-50	2900	0.5	2090.3	27.25	2106	28.15	2114.6	28.15	2122	31.67	2126.4	35.79	2130.6	45.51	2132.9	57.83
		1	2050.5	45.09	2078.8	45.99	2094.2	45.99	2107.6	49.51	2115.5	53.63	2123.1	63.35	2127.2	75.67
		1.5	2013.7	62.92	2053.6	63.82	2075.4	63.82	2094.3	67.34	2105.4	71.46	2116.1	81.18	2121.9	93.5
		2	1978.7	80.75	2029.7	81.65	2057.4	81.65	2081.6	85.17	2095.8	89.29	2109.5	99.01	2116.9	111.33
1300-38	2900	0.5	1827.4	28.36	1836.5	29.59	1841.4	29.59	1845.7	34.59	1848.2	39.63	1850.6	53.75	1851.9	69.47
		1	1804.5	43.82	1820.8	45.05	1829.7	45.05	1837.4	50.05	1841.9	55.09	1846.3	69.21	1848.6	84.93
		1.5	1783.3	59.29	1806.3	60.52	1818.9	60.52	1829.7	65.52	1836.1	70.56	1842.3	84.68	1845.6	100.4
		2	1763.2	74.76	1792.6	75.99	1808.6	75.99	1822.5	80.99	1830.6	86.03	1838.5	100.15	1842.7	115.87
1300-42	2900	0.5	2181	31.39	2193.3	32.62	2200	32.62	2205.9	37.62	2209.3	42.66	2212.6	56.78	2214.4	72.5
		1	2149.7	49.89	2171.9	51.12	2184	51.12	2194.5	56.12	2200.7	61.16	2206.7	75.28	2209.9	91
		1.5	2120.7	68.39	2152.1	69.62	2169.2	69.62	2184	74.62	2192.8	79.66	2201.2	93.78	2205.7	109.5
		2	2093.2	86.89	2133.3	88.12	2155.1	88.12	2174	93.12	2185.2	98.16	2196	112.28	2201.8	128

SN系列三螺杆泵 NPSHr 表

规格 Size	转速 / Rev. ( r / min )																					
	950							1450							2900							
	运动粘度 Viscosity (mm <sup>2</sup> /s)																					
	10	20	40	75	150	380	760	10	20	40	75	150	380	760	10	20	40	75	150	380	760	
必须汽蚀余量 NPSHr / Required NPSHr ( m )																						
40-38	2	2	2	2	2	2	2	2	2	2	2	2	2	2	2	2	2	2	2.2	2.6		
40-46	2	2	2	2	2	2	2	2	2	2	2	2	2	2	2	2	2	2.2	2.5	3	3.6	
40-54	4.4	4.5	4.7	5.2	5.7	6.3	7	4.5	4.6	4.8	5.3	5.8	6.4	7.2	4.9	5	5.3	5.9	6.4	7.2	8.1	
80-36	2	2	2	2	2	2	2	2	2	2	2	2	2	2	2	2	2	2.2	2.6	3		
80-42	2	2	2	2	2	2	2	2	2	2	2	2	2	2	2	2	2	2.3	2.7	3.3	3.8	
80-46	2	2	2	2	2	2	2	2	2	2	2	2	2	2.2	2.2	2.3	2.5	3	3.5	4.2	5	
80-54	4.4	4.5	4.8	5.2	5.8	6.3	7.1	4.5	4.7	4.9	5.4	6	6.5	7.4	5.4	5.6	5.9	6.5	7.4	8.4	9.4	
120-42	2	2	2	2	2	2	2	2	2	2	2	2	2.2	2	2.2	2.4	2.7	3.2	3.9	4.6		
120-46	2	2	2	2	2	2	2	2	2	2	2	2	2.1	2.4	2.5	2.6	2.9	3.4	4	5	5.9	
120-51	4.4	4.5	4.8	5.2	5.8	6.3	7.1	4.5	4.7	4.9	5.4	6	6.5	7.4	5.4	5.6	5.9	6.5	7.4	8.4	9.4	
120-54	4.4	4.5	4.8	5.2	5.8	6.4	7.2	4.6	4.7	5	5.5	6	6.7	7.4	5.9	6	6.4	7.1	8.1	9.3		
210-40	2	2	2	2	2	2	2	2	2	2	2	2	2	2.2	2.5	2.6	2.8	3.3	3.9	4.7	5.6	
210-46	2	2	2	2	2	2	2	2	2	2	2	2	2.1	2.4	2.8	3.2	3.5	3.9	4.6	5.4	6.9	8
210-54	4.5	4.7	4.8	5.4	5.9	6.4	7.3	4.7	4.9	5.2	5.7	6.2	6.9	7.9	6.8	7	7.5	8.4	9.6			
280-43	2	2	2	2	2	2	2.2	2	2	2	2.1	2.3	2.8	3.2	4.2	4.5	4.7	5.6	6.6	8.4		
280-46	2	2	2	2	2	2	2.2	2	2	2	2.1	2.3	2.8	3.2	4.2	4.5	4.7	5.6	6.6	8.4		
280-54	4.5	4.7	4.9	5.4	5.9	6.5	7.4	4.8	5	5.3	5.9	6.4	7.2	8.1	7.8	8.2	8.8					
440-40	2	2	2	2	2	2	2.1	2	2	2	2	2.2	2.5	3	3.6	3.8	4.2	5	5.8	7.2	8.6	
440-46	2	2	2	2	2	2.2	2.4	2	2	2.1	2.4	2.6	3.2	3.9	5.5	5.7	6.4	7.5	8.6			
440-52	4.6	4.7	5	5.5	6	6.6	7.5	5	5.2	5.5	6.1	6.8	7.7	8.6	9.5							
440-54	4.6	4.7	5	5.5	6	6.6	7.5	5	5.2	5.5	6.1	6.8	7.7	8.6	9.5							
660-40	2	2	2	2	2	2.1	2.4	2	2	2	2.2	2.6	3.1	3.6	4.8	5	5.6	6.7	7.8			
660-44	2	2	2	2	2.1	2.5	2.8	2.2	2.3	2.5	3	3.4	4.1	5	7.5	7.8	8.6					
660-46	2	2	2	2	2.1	2.5	2.8	2.2	2.3	2.5	3	3.4	4.1	5	7.5	7.8	8.6					
660-51	4.7	4.8	5.1	5.7	6.2	6.9	7.8	5.3	5.5	5.9	6.5	7.3	8.4	9.3								
660-54	4.7	4.8	5.1	5.7	6.2	6.9	7.8	5.3	5.5	5.9	6.5	7.3	8.4	9.3								
940-36	2	2	2	2	2	2.1	2.3	2	2	2.1	2.3	2.8	3.2	4.2	4.5	4.7	5.6	6.6	8.4	9.2		
940-42	2	2	2	2	2.1	2.3	2.6	2	2.1	2.3	2.7	3.1	3.8	4.5	6.5	6.8	7.5	8.8				
940-46	2	2	2	2.1	2.3	2.7	3.2	2.4	2.6	2.9	3.7	4	5	5.9	9.4							
940-50	4.8	4.9	5.3	5.8	6.4	7.2	8.1	5.8	6	6.4	7.1	8.1	9.3									
940-54	4.8	4.9	5.3	5.8	6.4	7.2	8.1	5.8	6	6.4	7.1	8.1	9.3									
1300-38	2	2	2	2.1	2.3	2.6	3.2	2.3	2.4	2.8	3.3	3.8	4.6	5.6	8.4	8.7	9.8					
1300-42	2	2	2	2.1	2.3	2.6	3.2	2.3	2.4	2.8	3.3	3.8	4.6	5.6	8.4	8.7	9.8					
1300-44	2	2	2	2.1	2.3	2.7	3.3	2.4	2.6	2.9	3.7	4	5	5.9	9.5							
1300-46	2	2	2	2.2	2.5	3	3.6	3	3.2	3.5	4.2	4.9	6.1	7.1								
1300-54	4.9	5.1	5.4	6	6.6	7.5	8.4	6.2	6.4	6.9	7.7	8.8										
1700-42	2	2	2	2.3	2.6	3	3.6	2.8	3	3.3	3.9	4.6	5.6	6.7								
1700-46	2	2.1	2.2	2.6	2.9	3.6	4.3	3.5	3.7	4	4.9	5.8	7.3	8.6								
2200-42	2.2	2.3	2.5	2.9	3.3	4	4.9	4	4.3	4.7	5.7	6.7	9.2									
2200-46	2.2	2.3	2.5	2.9	3.3	4	4.9	4	4.3	4.7	5.7	6.7	9.2									
2900-40	2	2.1	2.3	2.6	3.1	3.7	4.4	3.6	3.6	4.2	5.1	6	7.4	8.9								
3600-46	2.5	2.8	3	3.6	4.2	5.1	6.2	5.3	5.6	6.4	7.6	8.8										
5300-36	2	2.1	2.2	2.6	2.9	3.6	4.3	3.5	3.7	4	4.9	5.8	7.3	8.6								
5300-42	2.5	2.8	3	3.6	4.2	5.1	6.2	5.3	5.6	6.4	7.6	8.8										
5300-46	3.2	3.7	4	4.8	6.6	7.1	8.3	7.1	9													
7400-32	2	2.1	2.2	2.6	2.9	3.6	4.3	3.5	3.7	4	4.9	5.8	7.3	8.6								
7400-40	2.5	2.8	3	3.6	4.2	5.1	6.2	5.3	5.6	6.4	7.6	8.8										
9400-32	2	2.2	2.4	2.7	3.2	3.9	4.6	3.8	3.8	4.5	5.4	6.2	7.8	9.6								
9400-40	3	3.3	3.8	4.4	5.1	6.4	7.5	6.5	7	8	9.6											

◎ 表中的NPSHr只适用于不含气体的介质 /

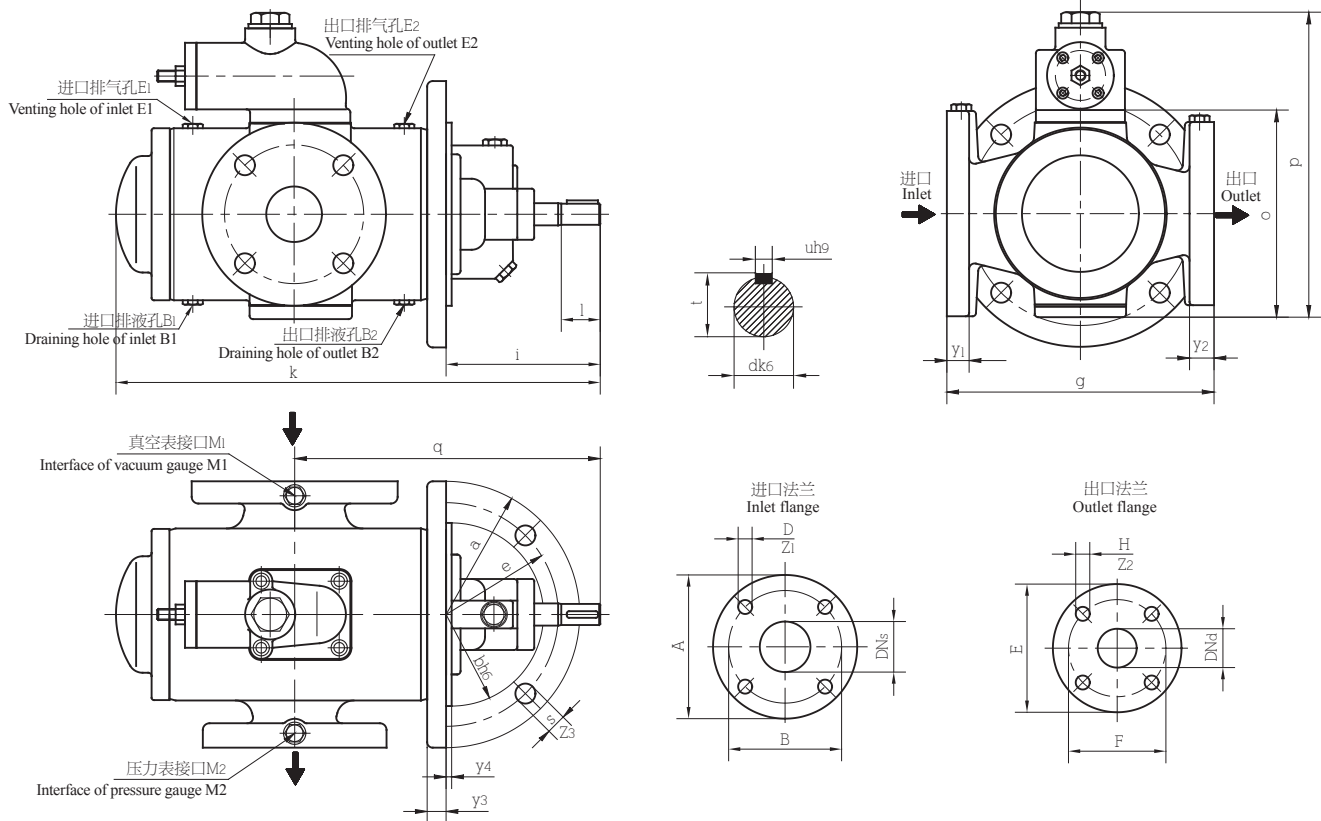
SNH系列三螺杆泵外形尺寸



规格 Size	泵尺寸 / Pump dimension							底脚尺寸 / Pump foot dimensions								轴伸 / Shaft end dimensions					
	g	h	k2	p	o	q1	q2	a	b	c	e	f	i	k1	s	d	l	u	t		
SNH40	200	106	393	268	189	230	230	70	144	10	114	170	192.5	284.5	11.5	19	40	6	21.5		
SNH80	240	118	435	292	213	275	275	70	144	10	144	170	234.5	326.0	11.5	19	35	6	21.5		
SNH120	260	150	503	335	265	317	317	140	180	15	190	210	246.0	411.0	14	24	45	8	27.0		
SNH210	300	160	580	355	285	352	352	140	180	15	190	210	281.0	446.0	14	28	55	8	31.0		
SNH280	330	190	630	460	330	390	390	200	300	30	280	350	291.0	531.0	23.0	32	55	10	35.0		
SNH440	360	200	716	480	350	440	440	200	300	30	280	350	340.0	580.0	23.0	38	60	10	41.0		
SNH660	390	215	800	510	380	490	490	200	300	30	280	350	390.0	630.0	23.0	42	75	12	45.0		
SNH940	410	225	886	530	400	555	555	200	300	30	280	350	450.0	690.0	23.0	48	80	14	51.5		
SNH1300	440	240	955	625	430	560	560	300	370	35	380	430	410.0	750.0	23.0	48	80	14	51.5		
SNH1700	480	260	1030	665	470	600	600	300	370	35	380	430	439.0	779.0	23.0	55	80	16	59.0		
SNH2200	500	265	1136	675	480	715	715	300	370	35	380	430	545.0	885.0	23.0	60	100	18	64.0		
SNH2900	600	315	1323	782	578	820	820	340	420	30	430	470	660.0	1045.0	27.0	75	120	20	79.5		
SNH3600	600	315	1323	782	578	820	820	340	420	30	430	470	660.0	1045.0	27.0	75	120	20	79.5		

规格 Size	进口法兰 / Inlet flange DIN2532=GB2555						出口法兰 / Outlet flange DIN2535=GB2555						排液孔 Draining hole	排气孔 Venting hole	压力表接口 Interface of pressure gauge
	DNs	A	B	D	y1	Z1	DNd	E	F	H	y2	Z2			
SNH40	32	140	100	18	18	4	25	115	85	14	18	4	B1/B2	E1/E2	M1/M2
SNH80	65	185	145	18	20	4	50	165	125	18	22	4	G1/4	G1/4	G1/4
SNH120	65	185	145	18	20	4	50	165	125	18	22	4	G1/4	G1/4	G1/4
SNH210	80	200	160	18	22	8	65	185	145	18	24	8	G3/8	G3/8	G1/4
SNH280	100	220	180	18	22	8	80	200	160	18	26	8	G3/8	G3/8	G3/8
SNH440	125	250	210	18	24	8	100	235	190	23	28	8	G1/2	G1/2	G1/2
SNH660	125	250	210	18	24	8	100	235	190	23	28	8	G1/2	G1/2	G1/2
SNH940	150	285	240	23	24	8	125	270	220	27	30	8	G1/2	G1/2	G1/2
SNH1300	150	285	240	23	24	8	125	270	220	27	30	8	G3/4	G3/4	G1/2
SNH1700	200	340	295	23	26	8	150	300	250	27	34	8	G3/4	G3/4	G1/2
SNH2200	200	340	295	23	26	8	150	300	250	27	34	8	G3/4	G3/4	G1/2
SNH2900	250	395	350	23	28	12	200	375	320	30	40	12	G3/4	G3/4	G1/2
SNH3600	250	395	350	23	28	12	200	375	320	30	40	12	G3/4	G3/4	G1/2

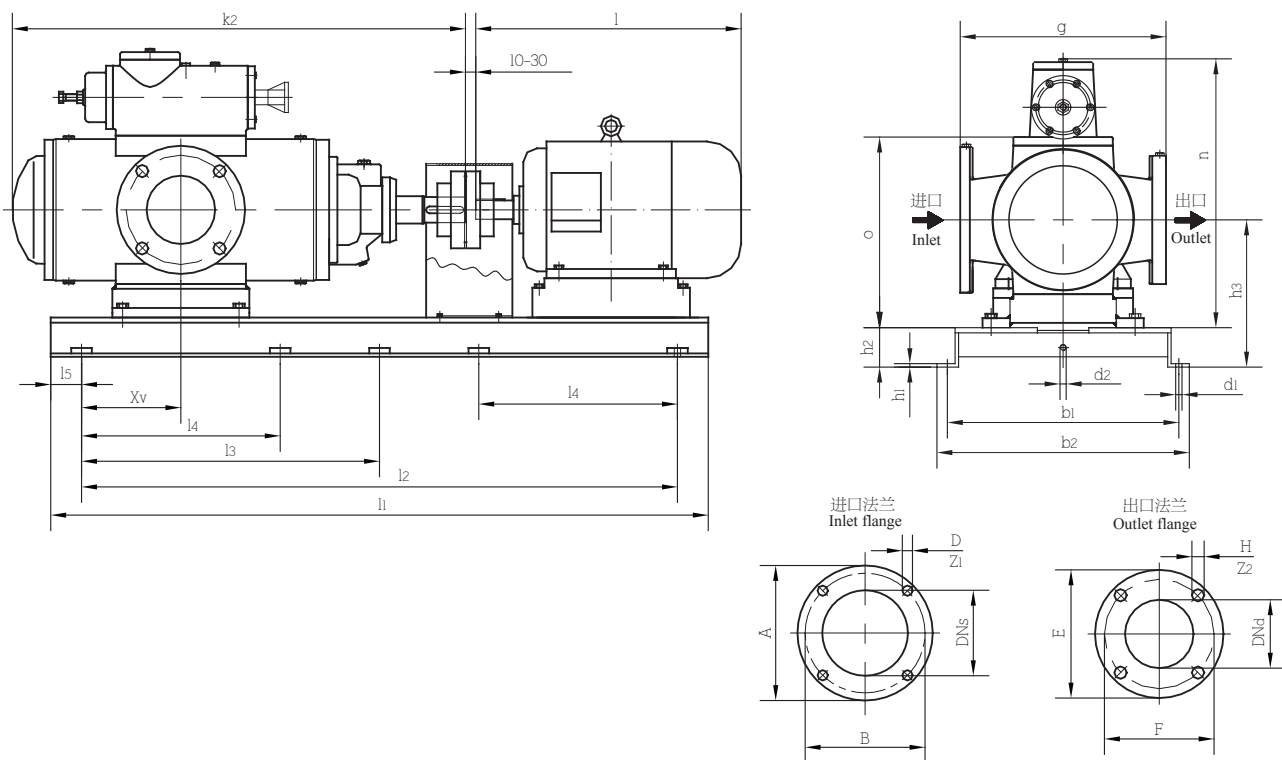
SNF系列三螺杆泵外形尺寸



规格 Size	泵尺寸 / Pump dimension					端部法兰尺寸 / Connecting flange dimensions								轴伸 / Shaft end dimensions			
	g	k	o	p	q	a	b	e	i	s	y3	y4	Z3	d	l	u	t
SNF40	200	383	166	245	230	190	130	160	130.5	14	14	5	4	19	40	6	21.5
SNF80	240	435	190	270	275	230	155	190	138.5	18	16	5	4	19	35	6	21.5
SNF120	260	503	230	300	317	260	185	220	168.0	18	18	5	4	24	45	8	27.0
SNF210	300	580	250	320	352	290	205	250	186.5	18	20	6	4	28	55	8	27.0
SNF280	330	630	280	410	390	310	220	260	194.5	23	22	6	4	32	55	10	35.0
SNF440	360	716	300	430	440	360	250	310	209.0	27	25	6	4	38	60	10	41.0
SNF660	390	800	330	460	490	380	270	320	239.0	27	25	6	4	42	75	12	45.0
SNF940	410	886	350	480	555	400	290	350	251.0	23	28	6	8	48	80	14	51.5
SNF1300	440	955	380	575	560	410	310	360	257.0	23	28	6	8	48	80	14	51.5
SNF1700	480	1030	420	615	600	480	350	420	258.0	23	28	6	8	55	80	16	59.0
SNF2200	500	1136	430	625	715	480	350	420	294.0	23	30	6	8	60	100	18	64.0
SNF2900	600	1325	526	730	820	560	450	500	394.0	27	40	6	8	75	120	20	74.5
SNF3600	600	1325	526	730	820	560	450	500	394.0	27	40	6	8	75	120	20	74.5

规格 Size	进口法兰 / Inlet flange DIN2535=GB2555						出口法兰 / Outlet flange DIN2535=GB2555						排液孔 Draining hole	排气孔 Venting hole	压力表接口 Interface of pressure gauge
	DN5	A	B	D	y1	Z1	DN6	E	F	H	y2	Z2			
SNF40	32	140	100	18	18	4	25	115	85	14	18	4	G1/4	E3/E4	M1/M2
SNF80	65	185	145	18	20	4	50	165	125	18	22	4	G1/4	G1/4	G1/4
SNF120	65	185	145	18	20	4	50	165	125	18	22	4	G1/4	G1/4	G1/4
SNF210	80	200	160	18	22	8	65	185	145	18	24	8	G3/8	G3/8	G1/4
SNF280	100	220	180	18	22	8	80	200	160	18	26	8	G3/8	G3/8	G3/8
SNF440	125	250	210	18	24	8	100	235	190	23	28	8	G1/2	G1/2	G1/2
SNF660	125	250	210	18	24	8	100	235	190	23	28	8	G1/2	G1/2	G1/2
SNF940	150	285	240	23	24	8	125	270	220	27	30	8	G1/2	G1/2	G1/2
SNF1300	150	285	240	23	24	8	125	270	220	27	30	8	G3/4	G3/4	G1/2
SNF1700	200	340	295	23	26	8	150	300	250	27	34	8	G3/4	G3/4	G1/2
SNF2200	200	340	295	23	26	8	150	300	250	27	34	8	G3/4	G3/4	G1/2
SNF2900	250	395	350	23	28	12	200	375	320	30	40	12	G3/4	G3/4	G1/2
SNF3600	250	395	350	23	28	12	200	375	320	30	40	12	G3/4	G3/4	G1/2

SNH系列三螺杆泵机组安装尺寸



底座规格表

底座规格	底座尺寸 / Base plate dimension										底座规格	底座尺寸 / Base plate dimension										
	b1	b2	d1	d2	h1	h2	l1	l2	l3	l5		b1	b2	d1	d2	h1	h2	l1	l2	l3	l4	l5
2	265	305	14.5	G1/4	25	40	515	315	-	100	11.1	520	580	25	M18×1.5	35	90	1390	1190	595	-	80
3	300	340	14.5	G3/8	30	45	575	355	-	110	12.1	575	635	25	M18×1.5	35	115	1570	1340	-	440	90
4	300	340	14.5	G3/8	30	45	645	400	-	123	12.3	645	705	25	M18×1.5	35	115	1570	1340	-	440	90
5	335	379	18.5	G3/8	30	50	725	500	-	113	13.1	575	635	25	M18×1.5	35	115	1720	1540	-	500	90
6	375	419	18.5	G3/8	30	50	825	560	-	132	14.1	675	755	25	M18×1.5	35	115	1720	1540	-	500	90
7.1	320	380	20	M14×1.5	35	73	940	630	-	155	16.3	675	736	18.5	M18×1.5	26	115	1920	1740	-	580	90
8.1	400	460	20	M18×1.5	35	75	980	630	-	155	17.1	675	736	18.5	M18×1.5	26	120	2120	1940	-	650	90
9.1	445	505	25	M18×1.5	35	87	1090	710	-	165												
10.1	470	530	25	M18×1.5	35	87	1190	900	450	130												

泵尺寸表

泵规格 Pump size	进口法兰 / inlet flange DIN2532=GB2555					出口法兰 / outlet flange DIN2535=GB2555					泵尺寸表 / Table of pump dimension			
	DN <sub>s</sub>	A	B	D	Z <sub>1</sub>	DN <sub>d</sub>	E	F	H	Z <sub>2</sub>	g	k <sub>2</sub>	n	o
SNH40	32	140	100	18	4	25	115	85	14	4	200	393	268	189
SNH80	65	185	145	18	4	50	165	125	14	4	240	435	292	213
SNH120	65	185	145	18	4	50	165	125	18	4	260	503	357	265
SNH210	80	200	160	18	8	65	185	145	18	8	300	580	377	285
SNH280	100	220	180	18	8	80	200	160	18	8	330	630	437	330
SNH440	125	250	210	18	8	100	235	190	23	8	360	716	457	350
SNH660	125	250	210	18	8	100	235	190	23	8	390	800	487	380
SNH940	150	285	240	23	8	125	270	220	27	8	410	886	507	400
SNH1300	150	285	240	23	8	125	270	220	27	8	440	955	622	430
SNH1700	200	340	295	23	8	150	300	250	27	8	480	1030	662	470
SNH2200	200	340	295	23	8	150	300	250	27	8	500	1136	672	480
SNH2900	250	395	350	23	12	200	375	320	30	12	600	1323	782	578
SNH3600	250	395	350	23	12	200	375	320	30	12	600	1323	782	578

泵、电机、底座配套表

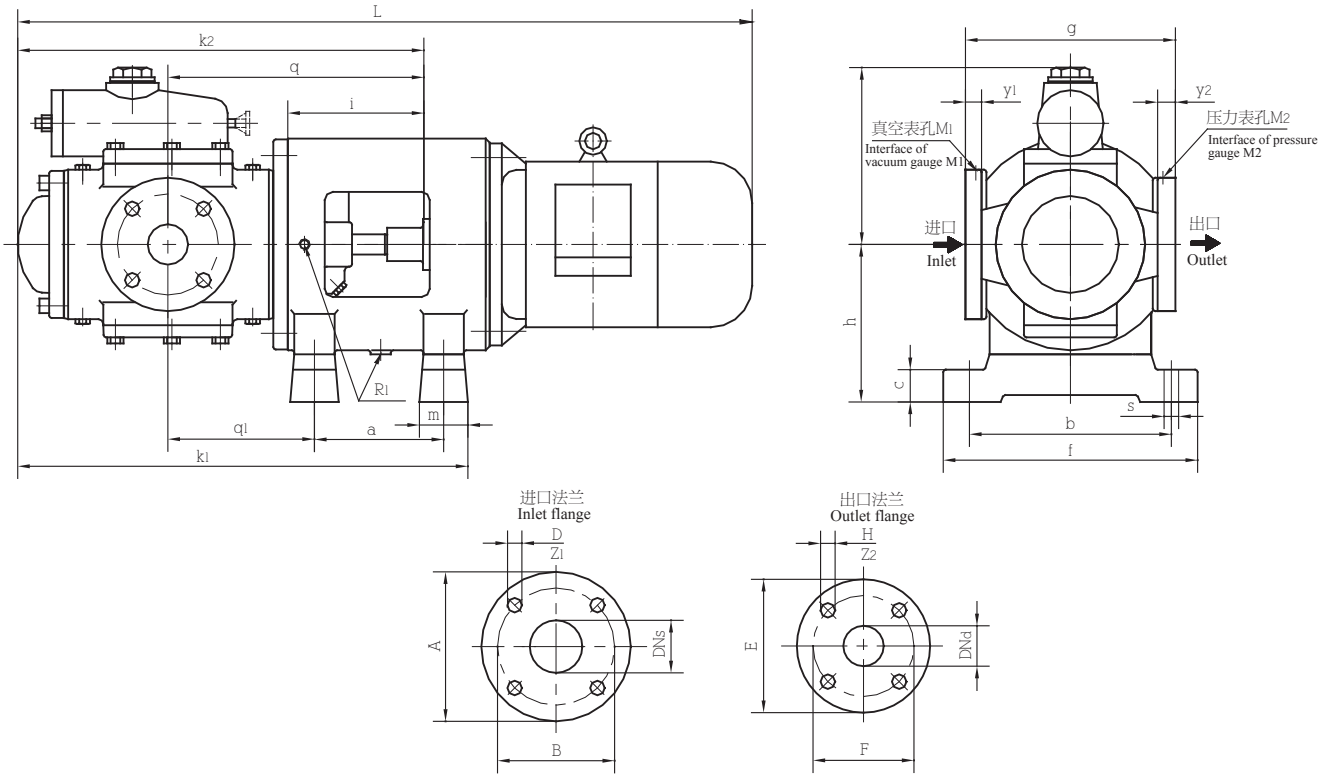
电机规格 Motor size	80	90S / L			100L			112M			132S			132M			160M			160L			180M					
l (近似值) Approx. value	285	310/315			380			400			475			515			600			645			670					
泵规格 Pump size	Gr - 标准底座规格号、h3 - 机组中心高、Xv - 法兰相对底脚螺栓位置尺寸(注: 为负值时表示底脚螺栓孔在法兰中心的右侧) Gr- code of standard base plate, h3-Center height of pump aggregate, Xv-Position dimension of flange relating to bolt in pump foot (Notice: A negative value indicates that hole of bolt in pump foot is on the right of the center of flange.)																											
	Xv	Gr	h3	Xv	Gr	h3	Xv	Gr	h3	Xv	Gr	h3	Xv	Gr	h3	Xv	Gr	h3	Xv	Gr	h3	Xv	Gr	h3	Xv	Gr	h3	
SNH40	-45	3	150	-45	3	150	-60	4	150	-60	4	157	-50	5	182	-50	5	182										
SNH80	-60	4	163	-60	4	163	-50	5	168	-50	5	168	-50	5	182	-50	6	182	-70	8.1	235	-70	8.1	235				
SNH120	-10	5	200	-10	5	200	-25	6	200	-25	6	200	-25	6	200	-25	6	200	-40	8.1	235	-40	8.1	235	-50	9.1	267	
SNH210				-25	6	210	-40	7.1	233	-40	7.1	233	-40	8.1	235	-40	8.1	235	-50	9.1	247	-50	9.1	247	-15	9.1	267	
SNH280							10	8.1	265	10	8.1	265	10	8.1	265	0	9.1	277	35	10.1	277	35	10.1	277	35	10.1	277	
SNH440										10	8.1	275	0	9.1	287	0	9.1	287	35	10.1	287	35	10.1	287	35	10.1	287	
SNH660													0	9.1	302	35	10.1	302	185	11.1	305	165	11.1	305	165	11.1	305	
SNH940																		35	10.1	312	150	11.1	315	130	11.1	315		
SNH1300																			180	11.1	330	230	12.1	355	230	12.1	355	
SNH1700																						200	12.1	375	200	12.1	375	
SNH2200																									100	12.1	380	
SNH2900																										290	16.3	430
SNH3600																										290	16.3	430

电机规格 Motor size	180L	200L			225S			225M			250M			280S			280M			315S			315M				
l (近似值) Approx. value	710	775			800			815/845			930			1000			1050			1240/1370			1370/1410				
泵规格 Pump size	Gr - 标准底座规格号、h3 - 机组中心高、Xv - 法兰相对底脚螺栓位置尺寸(注: 为负值时表示底脚螺栓孔在法兰中心的右侧) Gr- code of standard base plate, h3-Center height of pump aggregate, Xv-Position dimension of flange relating to bolt in pump foot (Notice: A negative value indicates that hole of bolt in pump foot is on the right of the center of flange.)																										
	Xv	Gr	h3	Xv	Gr	h3	Xv	Gr	h3	Xv	Gr	h3	Xv	Gr	h3	Xv	Gr	h3	Xv	Gr	h3	Xv	Gr	h3	Xv	Gr	h3
SNH210	-15	10.1	267	-30	10.1	287																					
SNH280	35	10.1	277	215	11.1	290	180	11.1	315	168	11.1	315															
SNH440	170	11.1	290	170	11.1	290	140	11.1	315	120	11.1	315	210	12.1	365	135	12.3	395									
SNH660	145	11.1	305	125	11.1	305	190	12.1	340	190	12.1	340	190	12.1	365	110	12.3	395									
SNH940	110	11.1	315	170	12.1	340	150	12.1	340	140	12.1	340	105	12.1	365	180	14.1	395	170	14.1	395						
SNH1300	210	12.1	355	190	12.1	355	170	12.1	355	160	12.1	355	230	13.1	365	200	14.1	395	180	14.1	395						
SNH1700	180	12.1	375	160	12.1	375	160	13.1	375	160	13.1	375	200	13.1	375	170	14.1	395	120	14.1	395	270	16.3	430	235	16.3	430
SNH2200	200	13.1	380	200	13.1	380	180	13.1	380	180	13.1	380	140	13.1	380	210	16.3	435	190	16.3	435	160	16.3	430	250	17.1	435
SNH2900	290	16.3	430	290	16.3	430	200	16.3	430	200	16.3	430	170	16.3	430	150	16.3	430	300	17.1	435	190	17.1	435			
SNH3600	290	16.3	430	290	16.3	430	200	16.3	430	200	16.3	430	170	16.3	430	150	16.3	430	300	17.1	435	190	17.1	435			

注: 机组安装尺寸为参考尺寸。



SNF系列三螺杆泵机组安装尺寸

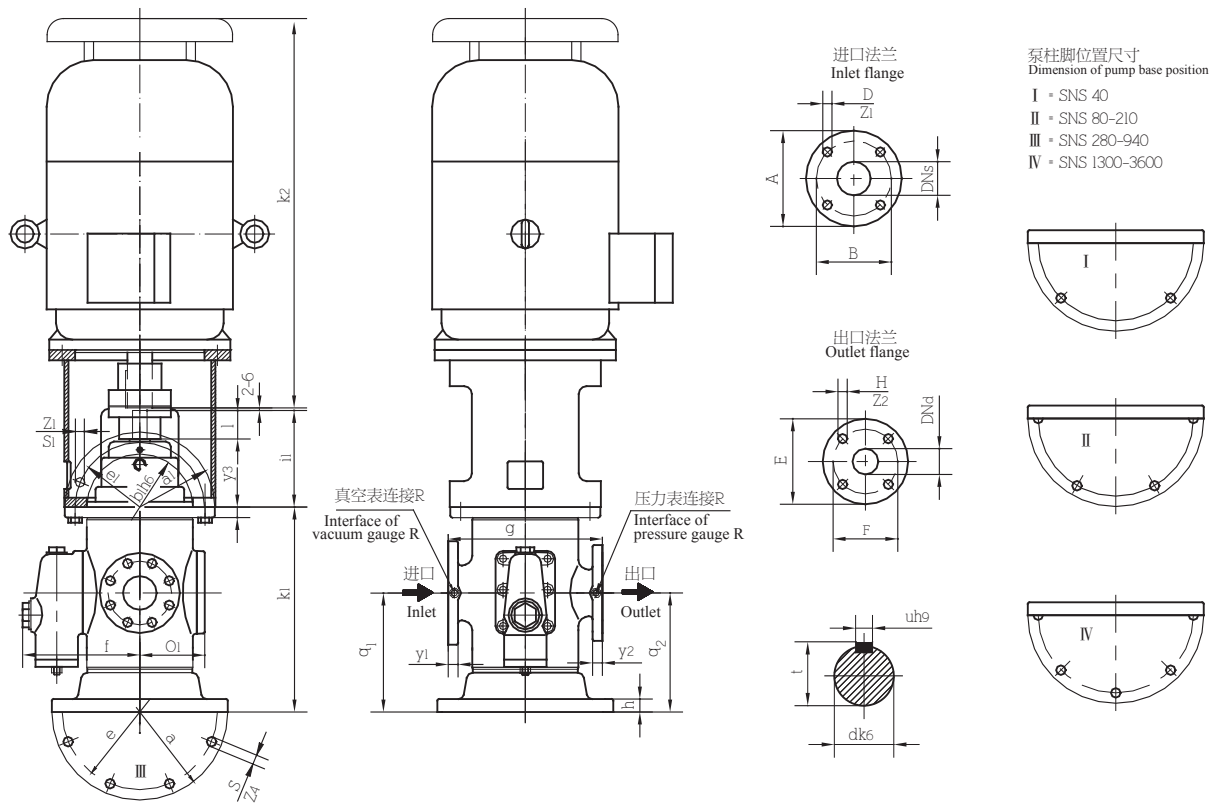


泵规格 Pump size	泵尺寸 / Pump dimension														压力表 接口 M1/M2 Interface of pressure gauge M1/M2	放泄孔 R1 Draining hole R1
	a	b	c	f	g	h	i	k <sub>1</sub>	k <sub>2</sub>	m	n	q	q <sub>1</sub>	s		
SNF40	140	190	33	227	200	180	130.5	459	393	57	162	230	127.5	11	G1/4	G3/8
SNF80	140	250	40	315	240	180	138.5	497.5	435	60	174	275	167.5	18	G1/4	G3/8
SNF120	160	250	40	315	260	195	168	558	503	60	207	317	182	18	G1/4	G3/8
SNF210	180	250	40	315	300	210	186.5	632.5	580	60	217	352	194.5	18	G1/4	G3/8
SNF280	185	250	40	315	330	220	194.5	681	630	60	247	390	226	18	G3/8	G3/8
SNF440	190	355	40	410	360	280	209	778.5	716	80	257	440	272.5	23	G1/2	G1/2
SNF660	220	355	40	410	390	290	239	865	800	80	272	490	295	23	G1/2	G1/2
SNF940	235	355	40	410	410	310	251	950	886	80	282	555	344	23	G1/2	G1/2
SNF1300	235	355	40	410	440	310	257	1015.5	955	80	382	560	345.5	23	G1/2	G1/2
SNF1700	270	355	40	410	480	340	258	1121	1030	80	402	600	381	23	G1/2	G1/2
SNF2200	270	355	40	410	500	340	294	1197	1136	80	407	715	466	23	G1/2	G1/2

泵规格 Pump size	进口法兰 / Inlet flange DIN2532=GB2555						出口法兰 / Outlet flange DIN2535=GB2555						电动机规格 / Motor size																									
	DN <sub>s</sub>		A	B	D	Z <sub>1</sub>	DN <sub>d</sub>		E	F	H	Y <sub>2</sub>	Z <sub>2</sub>	80	90S	90L	100L	112M	132S	132M	160M	160L	180M	180L	200L	225S	225M	250M	280S	280M								
	L 的大约尺寸 / Approx. dimension of L																																					
SNF40	32	140	100	18	18	4	25	115	85	14	18	4	710	720	745	785	815	880	920																			
SNF80	65	185	145	18	20	4	50	165	125	18	22	4	750	760	785	825	855	920	960																			
SNF120	65	185	145	18	20	4	50	165	125	18	22	4	820	830	855	895	925	985	1025	1135	1180	1210	1250															
SNF210	80	200	160	18	22	8	65	185	145	18	24	8		905	930	970	1000	1060	1100	1210	1255	1285	1325	1375														
SNF280	100	220	180	18	22	8	80	200	160	18	26	8				1020	1070	1130	1170	1280	1325	1355	1400	1445														
SNF440	125	250	210	18	24	8	100	235	190	23	28	8						1195	1235	1345	1390	1420	1460	1510	1550	1595	1680	1740										
SNF660	125	250	210	18	24	8	100	235	190	23	28	8						1285	1325	1435	1480	1510	1550	1600	1640	1685	1770	1830										
SNF940	150	285	240	23	24	8	125	270	220	27	30	8						1365	1405	1515	1560	1590	1630	1680	1720	1765	1850	1910										
SNF1300	150	285	240	23	24	8	125	270	220	27	30	8								1585	1630	1660	1700	1750	1790	1835	1920	1980	2025									
SNF1700	200	340	295	23	26	8	150	300	250	27	34	8								1660	1705	1735	1775	1825	1865	1910	1995	2055	2100									
SNF2200	200	340	295	23	26	8	150	300	250	27	34	8											1840	1880	1930	1970	2015	2100	2160	2205								

注：机组安装尺寸为参考尺寸。

SNS系列三螺杆泵机组安装尺寸



泵规格 Pump size	柱脚法兰 / Pump foot flange					驱动端法兰 / Connecting flange						泵尺寸 / Pump dimension						
	a	h	e	s	z4	a1	b1	e1	y3	s1	z3	f	g	i1	k1	o1	q1	q2
SNS40	250	22	220	14	4	190	130	160	14	14	4	163.5	200	130.5	260	83	160	160
SNS80	280	23	240	18	6	230	155	190	16	18	4	175.5	240	138.5	365.5	95	229	229
SNS120	320	25	280	18	6	260	185	220	18	18	4	185	260	168	408.5	115	260	260
SNS210	340	25	300	18	6	290	205	250	20	18	4	195	300	186.5	396	125	230	230
SNS280	400	30	360	18	8	310	220	260	22	23	4	246	330	194.5	546	140	350	350
SNS440	420	35	380	18	8	360	250	310	25	27	4	256	360	209	581	150	350	350
SNS660	480	35	440	18	8	380	270	320	25	27	4	271	390	239	601	165	350	350
SNS940	510	40	460	18	8	400	290	350	28	23	8	281	410	251	674	175	370	370
SNS1300	560	35	500	23	8	410	310	360	28	23	8	300	440	257	743	190	450	450
SNS1700	600	35	540	23	8	480	350	420	28	23	8	320	480	258	808	210	466	466
SNS2200	620	40	560	23	8	480	360	420	30	23	8	325	500	294	871	215	450	450
SNS2900	800	60	700	30	8	560	450	500	40	27	8	461	600	394	1006	271	580	580
SNS3600	800	60	700	30	8	560	450	500	40	27	8	461	600	394	1006	271	580	580

泵规格 Pump size	进口法兰 / Inlet flange DIN2532=GB2555						出口法兰 / Outlet flange DIN2532=GB2555						
	A	B	C	D	y1	z1	E	F	G	H	y2	z2	R
SNS40	140	100	32	18	18	4	115	85	25	14	18	4	G1/4"
SNS80	185	145	65	18	20	4	165	125	50	18	22	4	G1/4"
SNS120	185	145	65	18	20	4	165	125	50	18	22	4	G1/4"
SNS210	200	160	80	18	22	8	185	145	65	18	24	8	G1/4"
SNS280	220	180	100	18	22	8	200	160	80	18	26	8	G3/8"
SNS440	250	210	125	18	24	8	235	190	100	23	28	8	G1/2"
SNS660	250	210	125	18	24	8	235	190	100	23	28	8	G1/2"
SNS940	285	240	150	23	24	8	270	220	125	27	30	8	G1/2"
SNS1300	285	240	150	23	24	8	270	220	125	27	30	8	G1/2"
SNS1700	340	295	200	23	26	8	300	250	150	27	34	8	G1/2"
SNS2200	340	295	200	23	26	8	300	250	150	27	34	8	G1/2"
SNS2900	395	350	250	23	28	12	375	320	200	30	40	12	G1/2"
SNS3600	395	350	250	23	28	12	375	320	200	30	40	12	G1/2"

标准电机 Standard motor	K2	标准电机 Standard motor	K2
71	255	180M	730
80	290	180L	770
90S	315	200L	850
90L	340	225S	910
100L	380	225M	935
112M	400	250M	1035
132S	475	280S	1120
132M	515	280M	1170
160M	605	315S	1390
160L	670	315M	1490

注：机组安装尺寸为参考尺寸。